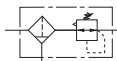


符号/Symbol



规格/Specification

保证耐压力/Ensured Pressure Resistance	1.5MPa(15kgf/cm ²)
最高使用压力/Highest Working Pressure	1.0MPa(10kgf/cm ²)
环境及流体温度/Ambient and Fluid Temperature	5~60°C
*过滤精度/Filter Precision	25µm
容器材料/Container Material	聚碳酸酯 /Polycarbonate
防护罩/Protective Cover	2000(无/Not Available) AW3000~5000(有/Available)
调压范围/Pressure Regulating Range	AW2000~5000: 0.05~8.5MPa (0.5~8.5kgf/cm ²)
阀型/Valve Type	带溢流型/With Overflow

*还有5、50µm可供选择。 / *5,50µm are available

型号/Model	规格/Specifications			配件 /Accessories		放水器功能 /Drain Function	注1) 自动排水型号 /Note 1)AutoDrain Model
	注2)额定流量 /Note 2)Rated Flow(L/min)	注3)接管口径 /Note 3) Port Size(G)	压力表口径 /Pressure Gauge Size	托架 /Bracket	压力表 /Pressure Gauge		
AW2000-02	550	1/4	1/8	B220	G36-10-01	a.停气排水 /Air Shutoff Drain b.手动排水 /Manual Drain	AW2000-02D
AW3000-02	2000	1/4	1/8	B320	G36-10-01		AW3000-02D
AW3000-03	2000	3/8	1/8	B320	G36-10-01		AW3000-03D
AW4000-04	4000	1/2	1/4	B420	G46-10-02		AW4000-04D
AW4000-06	4500	3/4	1/4	B420	G46-10-02		AW4000-06D
AW5000-06	5500	3/4	1/4	B420	G46-10-02		AW5000-06D
AW5000-10	5500	1	1/4	B420	G46-10-02		AW5000-10D

注1) AW2000有两种自动排水结构可选，脉冲式自动排水器为常规选型，还有杠杆式自动排水器可选，订货时用“D2”表示；AW2000-02D2；

AW3000~AW5000自动排水器结构以杠杆式为常规选型，还有浮球式自动排水器可选。详细说明请参阅自动排水器介绍。

注2) 供应压力为0.7MPa(7.1kgf/cm²) 设定压力为0.5MPa(5.1kgf/cm²)的情况下。

注3) 接管口径另有Rc、NPT螺纹可供选择。

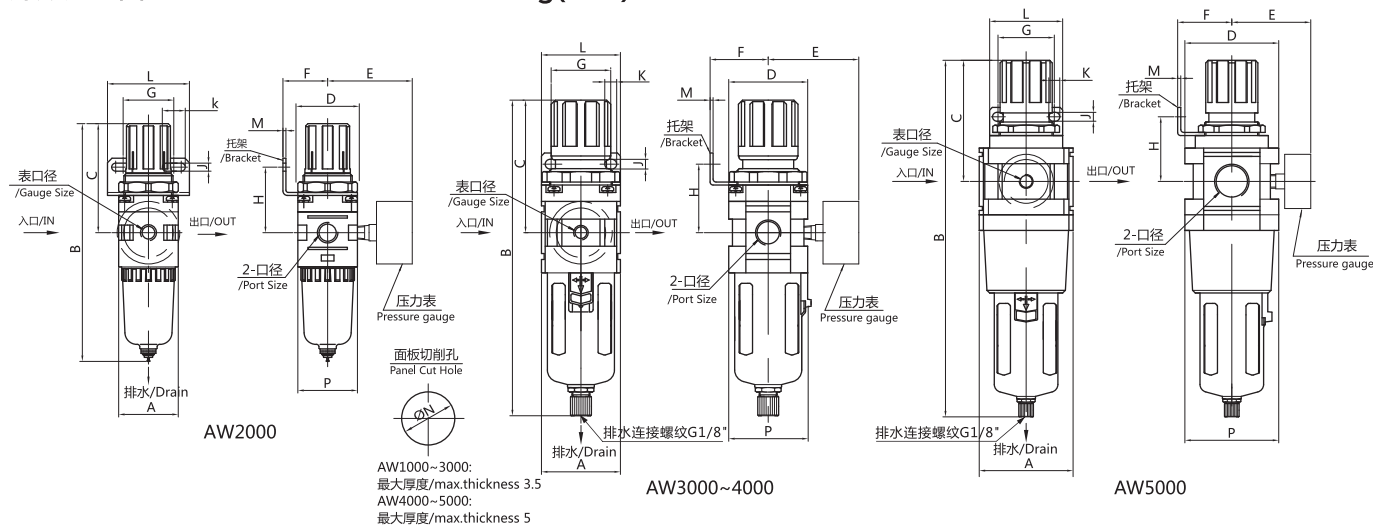
Note 1) There are 2 types auto drain for AW2000, pulsed type and lever type."D" means normal auto drain, pulsed type"D2" means lever type auto drain. For Example: AW2000-02D2.

The normal auto drain for AW3000-AW5000 is lever type, but the float type auto drain is available for choose. Please check the details from AUTO DRAIN in page 70.

Note 2) Under the circumstance that the supply pressure is 0.7 MPa (7.1 kgf / cm²) and the set pressure is 0.5 MPa (5.1 kgf/cm²).

Note 3) Rc ,NPT thread are available

外形尺寸图/Overall Dimension Drawing(mm)



尺寸表/Dimension Form (mm)

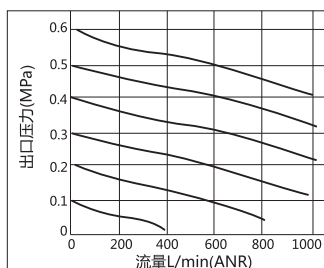
型号/Model			A	B	C	D	E	F	G	H	J	K	L	M	N	P		
AW2000-02	1/4	1/8	40	158	78	40	56.8	30	34	43.5	5.4	15.4	55	2.3	33.5	40	182	*197
AW3000-02	1/4	1/8	53	208	92.5	53	60.8	39	40	46	6.5	8	53	2.3	42.5	56		223
AW3000-03	3/8	1/8	53	208	92.5	53	60.8	39	40	46	6.5	8	53	2.3	42.5	56		223
AW4000-04	1/2	1/4	70	256	112	70	70.5	49.2	54	53.5	8.5	10.5	70	2.3	52.5	73		262
AW4000-06	3/4	1/4	75	261	114	70	70.5	49.2	54	55.5	8.5	10.5	70	2.3	52.5	73		266
AW5000-06	3/4	1/4	90	338	116	90	75.5	49.2	54	62	8.5	10.5	70	2.3	52.5	90		343
AW5000-10	1	1/4	90	338	116	90	75.5	49.2	54	62	8.5	10.5	70	2.3	52.5	90		343

*标注尺寸为杠杆式自动放水器高度尺寸。 *This size is for lever type auto drain.

流量特性曲线/ Characteristic Curve of Flow Rate

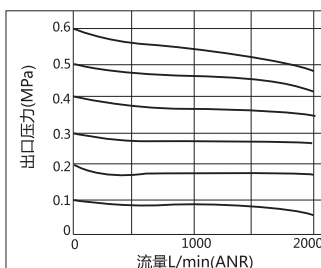
AW2000

1/8-1/4



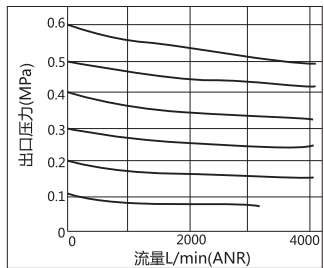
AW3000

1/4-3/8



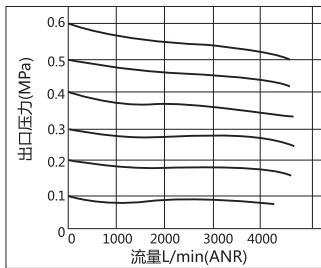
AW4000

3/8-1/2



AW4000-06

3/4

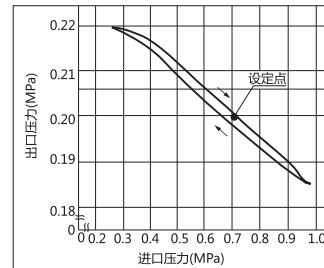


进口压力/Inlet Pressure P₁=0.7MPa

压力特性曲线/Characteristiic Curve of Pressure

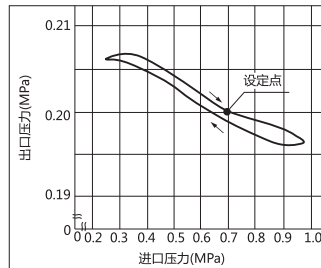
AW2000

1/8-1/4



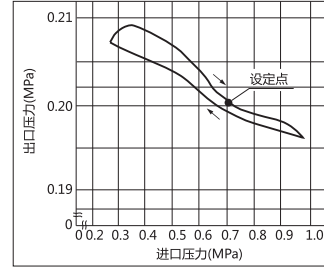
AW3000

1/4-3/8



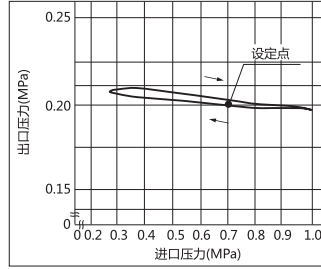
AW4000

3/8-1/2



AW4000-06

3/4



进口压力/Inlet Pressure P₁=0.7Mpa

出口压力/Outlet Pressure P₂=0.2Mpa

流量/Flow Rate Q=20L/min(ANR)